

# FLEXIA C1

## *Video Inspection Microscope*

Lightweight, hand-held Video Microscope equipped with integrated "Ring Light" illumination and "Zoom Unit".

Creates high quality images at different magnifications on your PC or any external monitor.

For Inspection, Measurement and Digital Recording of different objects in Electronics, Mechanics, Medical and Chemistry Industries.

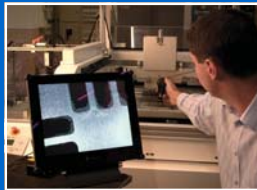
Perfect for mobile  
inspection and image  
documentation

# FLEXIA C1

Video Inspection Microscope



Objects difficult to access



PCB's and control on an SMD line



Outdoor - Field use

## ALMIT TECHNOLOGY LTD.

Unit 7, Forest Row Business Park  
Station Road  
Forest Row  
East Sussex  
RH18 5DW  
United Kingdom

Phone: +44 (0)1342 822844  
Fax: +44 (0)1342 824155  
Email: [info@almit.co.uk](mailto:info@almit.co.uk)  
Web: [www.almit.com](http://www.almit.com)

Distributor:

## The flexible, mobile Flexia C1

*Flexia* has a very wide field of applications. Material and components that, normally, cannot be inspected through a microscope, can be seen in high magnification. (Magnifications of up to 170x can be seen on a 15" monitor).

*Flexia* can be attached to various types of stands. Video monitors of any kind can be used. (see *image below*). Battery-driven for mobile applications or, for workbench/ indoor applications, connect to 230v AC.

If you want to save pictures, you can choose from any of our two frame-grabbing options, with suitable software systems. These pictures can then be saved onto your PC.



It is only your imagination that limits the use of *Flexia*. It can be used for skin inspection, hair, animals, flowers, plants and seeds. Industrial applications like tools, machines, turbine blades, aircraft components, concrete and plastics.

### Accessories available:

Diffraction Limited Zoom or Fixed Focal Length Objectives,  
Handheld 4" Colour TFT Monitor (480 x 234 pixels),  
Bench-top 6.4" Colour TFT Monitor (960 x 234 pixels),  
Flexible Stand,  
USB PC Adapter or PCMCIA Card for digital image recording.

### Specification:

Image Sensor:	¼ " Color CCD, 510(H)x582(V) pixels.
Magnification:	18x - 200x (depending on objectives) on 15" monitor
Illumination:	Integrated Ring Light, white LED, 2000 mcd, 7800°K
Field of View:	5 - 30mm
Fixed Focal:	13 - 200mm
Power Source:	Power supply 90 - 260v AC, 50 - 60 Hz or powered directly by Handheld 4.0" Monitor

